

SNMP

for all EFFEKTA® AC UPSs (400VA-300kVA)



CS 121 SNMP adapter

The CS121 is equipped with a 32-bit processor, 8 MB RAM, 4 MB Flash, 2 serial interfaces and a 10/100MBIT network connection.

COM1 is provided for communication with the UPS, COM2 may be used for configuring the adapter, connection to a modem or to forwarding UPS data to other computers.

Other features in the area of UPS visualisation and the remote-controlled network shutdown option (RCCMD) make the CS121 easy to operate and increase its range of application.

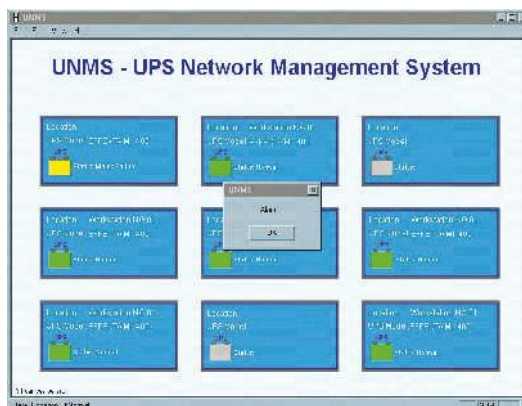
Optionally the CS121 "Budget" (right hand picture) is available for reasonable network solutions. This version of the adapter is for the limited purpose of network communication, so it is not equipped with the additional interfaces of the "Professional" version (picture at the top of the page).

- Powerful 32-bit RISC processor, 8MB RAM, 4MB Flash
- Supported protocols: SNMP, HTTP, Telnet, UPSMON, PPP/ SLIP, SMTP and FTP, Modbus
- 10/100 Mbit Ethernet connection
- 2 serial RS-232 interfaces (RS-422/ 485 optional)
- Modem support for UPS dialer and internet connection
- Integrated WEB server
- Visualisation via UPSMON, JAVAMON, UNMS, NMS, WEB browser or TELNET
- Support UPS standard MIB RFC1628





Configuration and monitoring via web browser



UNMS (9 UPSs)

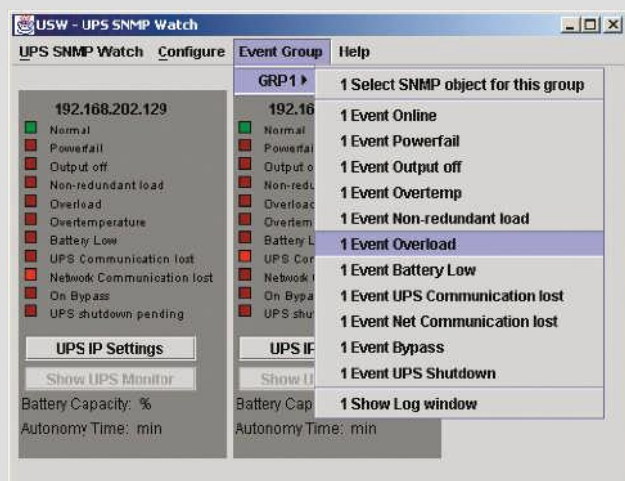
UPSMAN module

- UPS monitoring via floating contacts or serial interface
- Local or network shutdown
- Event-based dispatch of network messages
- Event-based dispatch of e-mails and SMS
- Schedulers for time-controlled execution of reboot, shutdown etc.
- Password protection for all UPS remote-functions
- Configuration via common web browsers
- Monitoring via UPSMON possible

UNMS UPS monitoring panel (freeware)

Available for Windows 95/ 98/ ME/ NT/ 2000 / XP / Vista (Business and higher)

- Clear representation of all network UPS
- Up to 9 UPS in network can be monitored (freeware version)
- Simple configuration
- Number of connections adjustable
- Acoustic alert
- Expandable on request
- SNMP adapter support
- Up to 1500 nodes optional



USW ("UPS SNMP Watch", left hand image)

- Monitoring of parallel and single UPSs
- Clear representation of all UPS status information
- User-defined configuration of all events
- Sequential network shutdown of computers in homogeneous and heterogeneous networks
- Available for UNIX and Windows NT/ 2000 / XP / Vista (Business and higher)
- UPS control via SNMP adapter and SNMP software agent (UPSMAN)
- Further graphical interfaces started via mouse-click (UPSMON, JAVAMON)
- Java-based program