

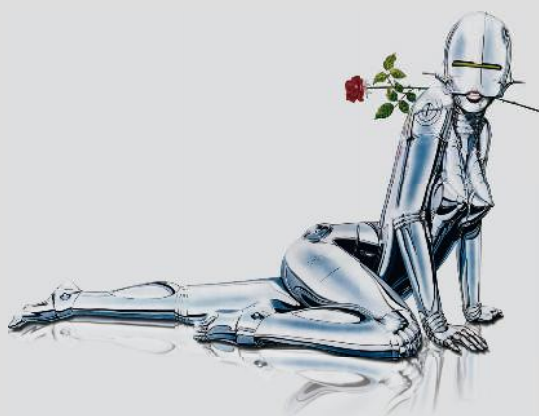
Software

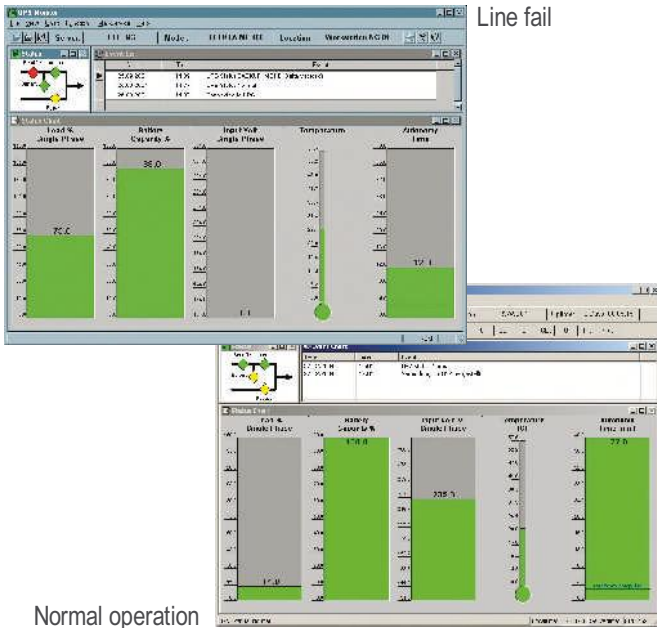
for all EFFEKTA® AC UPSs (400VA-300kVA)



The UPS management software solution PowerShut Plus runs as a client/server application for heterogeneous networks or local computers. It works on Windows 95/98/2000/NT/XP/Vista (Business and higher), Novell, Linux and all current Unix derivatives. It also includes an SNMP agent for Windows NT and Novell. All Servers on the network can be shut down via RCCMD (Multiserver-Shutdown). The software provides all important UPS information such as battery level, temperature, condition of line-voltage and others in clear graphical displays. Disruptions can be reported by e-mail, mobile phone or fax.

- Available for Windows 9x, NT, 2K, 2003 Server, XP, Vista (Business and higher), Netware, Macintosh, UNIX and VMS
- UPS monitoring via floating contacts or serial interface
- Local or network shutdown on up to several hundred computers
- Integrated SNMP subagent (RFC 1628)
- Graphical interface with all UPS information
- Graphical interface on UNIX, MAC, VMS (JAVAMON)
- Event-based dispatch of network messages
- Event-based dispatch of e-mails and SMS
- Logging of all UPS status information and measurements in MS-Excel file
- Schedulers for time-controlled execution of reboot, shutdown etc.



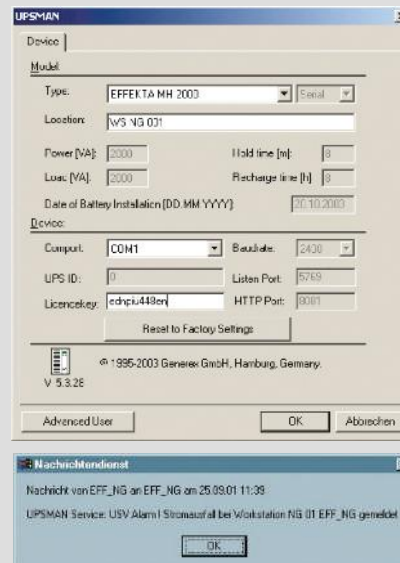


UPSMON module (right-hand images)

- Monitoring of all UPSs connected via UPSMAN/SNMP adapter
- Remote network control of all UPS
- Graphical representation of UPS input data (current, voltage)
- Reading and display UPSMAN event log files
- Programming UPSMAN scheduler
- Graphical interface with all UPS information
- Graphical interface on UNIX, MAC, VMS (JAVAMON)

UPSMAN module (right-hand images)

- UPS monitoring via with floating contacts or serially
- Local or network shutdown
- Integrated SNMP subagent (RFC 1628)
- Event-based dispatch of network messages
- Event-based dispatch of e-mails and SMS
- Logging of all UPS status information and measurement data
- Scheduler for time-controlled execution of reboot, shutdown etc.
- Password protection for all UPS remote functions
- Time dependent control of up to four consumer units (optional hardware necessary)
- Configuration parameters identical on all platforms (UNIX, Windows, Netware, VMS, MAC)
- UPSMAN runs in the background as an independent service process



UPSMAN configuration

Message: "line fail"

RCCMD (optional client module / bottom left image)

- Available for Windows 9x, NT, 2000, XP, Vista (Business and higher) Netware, Mac OS (up to 9.x), UNIX and VMS
- Currently for 25 operating systems, older ones also available
- Unlimited number of clients possible
- Sequential network shutdown configurable
- Configuration of clients on network
- Event-based connection with UPSMAN
- Simple installation and configuration
- Protected against unauthorised client regulation
- No network load at all

